



## SITEMONITORLIVE +VOLUMES

SITEMONITOR LIVE +VOLUMES removes the need to manually measure stockpiles. Our industry leading scanner and software package provides time-series automated calculations to improve the safety and accuracy of surveys. Operating at over 95% accuracy, this intuitive and easy to manage system streamlines inventory management for remote or large operations.

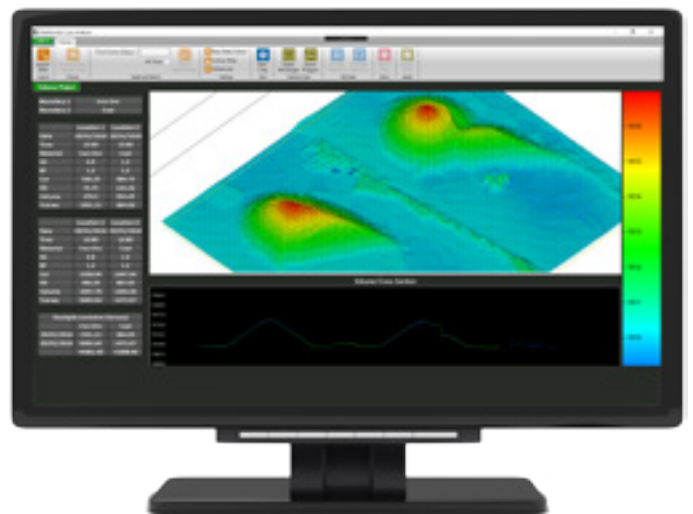
Multiple scanner set-ups offer enhanced coverage, with the ability to measure at business-critical intervals – end of shift, run-of-mine calculations and waste management.

### Key Features

- Multiple scanner set-up for 360° view or site-wide coverage
- Simple, intuitive interface for real-time intelligence
- Scalable solution for a future-proof investment
- Fully automated data collection and reporting

### Applications Include

- Stockpile volume calculations
- Mined volume reconciliation
- Inventory management
- Logistics planning



SITEMONITOR LIVE is a scalable platform for capturing and managing 3D data. Designed to work in harsh industrial environments, our latest LiDAR based solutions provide enhanced operational and environmental intelligence in a modular package. From real-time volumetric calculations to critical slope stability alerts, SITEMONITOR LIVE represents a step-change in the approach to situational monitoring.



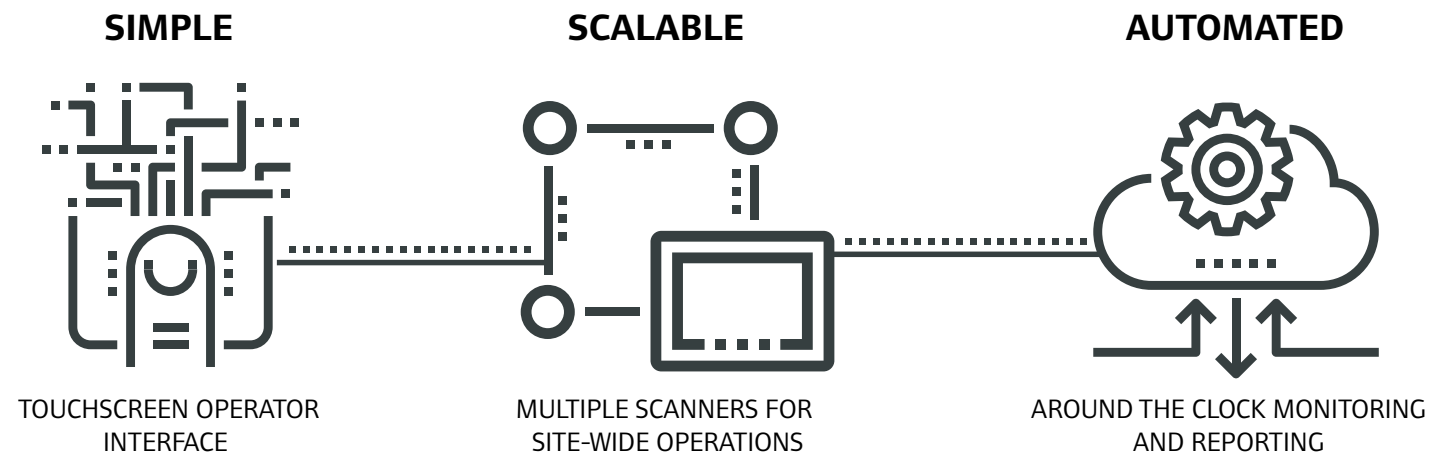
## Software

The user-friendly software interface has been created to allow projects to be set up in seconds. Data capture, sensor management and schedules are managed from one screen for ease of use and clear visibility of project progress.

Other software benefits include automatic feature classification and removal to enable accurate calculations to be made despite surrounding machinery or structures.

## Laser Scanners for Outdoor Automation

3DLM laser scanners are ideally suited to dusty or exposed environments (IP rated from 65 to 69). With fast scan rates, wide fields of view and long ranges, the scanners available are highly accurate in both range and angle. Multiple scanners can be affordably combined to give a 360° view across a large site and linked together to support site wide operations.



**3DLM-SR-50**

Range: 50m

FOV: 180° x 200°

Weight: 3.7kg

160(l) x 155(w) x 185(h) mm

Base plate mountable to any surface



**3DLM-MR-100**

Range: 100m

FOV: 360° x 90°

Weight: 10kg

580(l) x 580(w) x 490(h) mm

Mounted to tripod or base plate



[WWW.3DLASERMAPPING.COM/SITEMONITOR-LIVE](http://WWW.3DLASERMAPPING.COM/SITEMONITOR-LIVE)

