



## SITEMONITORLIVE +SLOPES

SITEMONITOR LIVE +SLOPES has been designed to monitor slopes in both industrial and environmental settings. This unique solution compares data collected over a period of time to identify rockfall and other precursors to slope failure.

With fully automated alerts and reports, +SLOPES provides constant and enhanced intelligence to improve safety in high risk areas whilst maintaining operational efficiency.

### Benefits

- Monitor slope stability on a large scale
- Cost-effective continuous measurements
- Alarm your data to mitigate against failure in real-time
- Conduct geotechnical analyses to understand displacement

### Key Features

- Fully automated calculations, reporting and alerts
- Maximum range of 4km for site-wide monitoring
- Define resolution settings, window size and frequency of scans
- Re-deployable and flexible assets for a scalable investment



SITEMONITOR LIVE is a scalable platform for capturing and managing 3D data. Designed to work in harsh industrial environments, our latest LiDAR based solutions provide enhanced operational and environmental intelligence in a modular package. From real-time volumetric calculations to critical slope stability alerts, SITEMONITOR LIVE represents a step-change in the approach to situational monitoring.



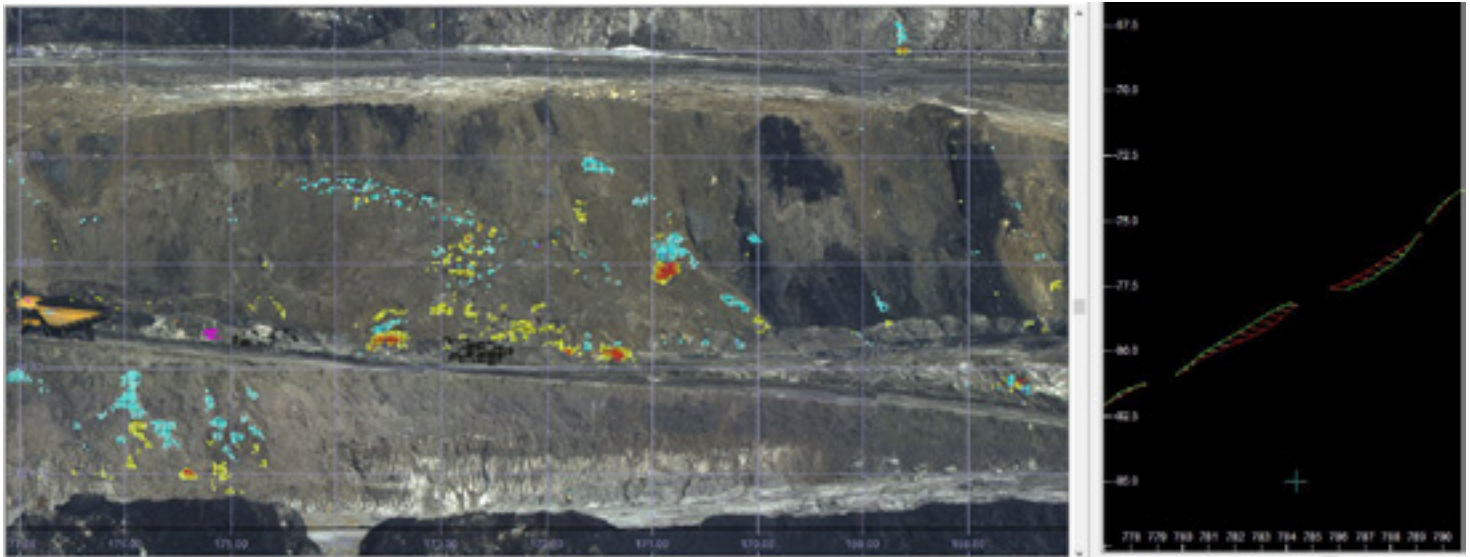
## Software

The user-friendly software interface has been created to allow projects to be set up in seconds. Data capture, sensor management and schedules are managed from one screen for ease of use and clear visibility of project progress.

Other software benefits include automatic feature classification and removal to enable accurate calculations to be made despite surrounding machinery or structures.

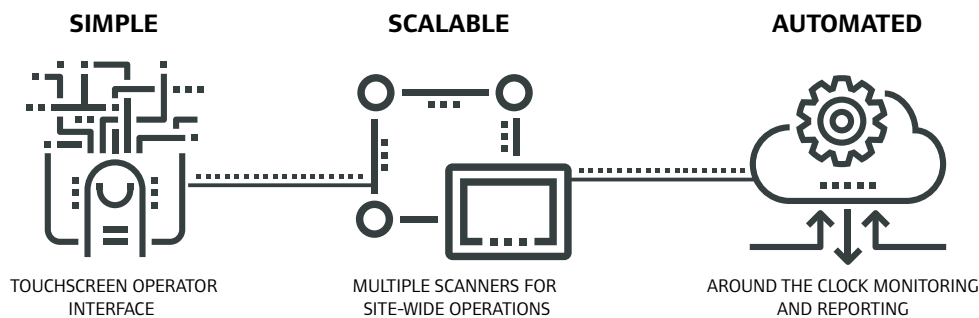
## Laser Scanners for Outdoor Automation

3DLM laser scanners are ideally suited to dusty or exposed environments (IP rated from 65 to 69). With fast scan rates, wide fields of view and ranges of up to 4km, the scanners available are highly accurate in both range and angle. Multiple scanners can be affordably combined to give a 360° view across a large site and linked together to support site-wide operations.



Screenshot of SITEMONITOR LIVE +SLOPES showing areas of displacement on a steep face, red indicates where material has accumulated and blue shows where material has been lost.

Vertical section showing relative difference between surveys.



[WWW.3DLASERMAPPING.COM/SITEMONITOR-LIVE](http://WWW.3DLASERMAPPING.COM/SITEMONITOR-LIVE)

